



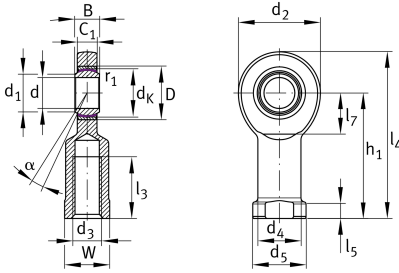
## GIR15-UK

### Rod end

Schaeffler ID:  
0066354150000

Rod end with internal thread, maintenance-free, sliding layer: PTFE composite, DIN ISO 12240-4, dimension series E, type F, inner ring curved surface with hard chromium coating, open design, right hand thread

### Technical information



### Main Dimensions & Performance Data

d	15 mm	Bore diameter bearing
D	26 mm	Outside diameter bearing
B	12 mm	Width inner ring
C <sub>r</sub>	17,800 N	Basic dynamic load rating, radial
C <sub>0r</sub>	44,800 N	Basic static load rating, radial
	0.177 kg	Weight

### Dimensions

d <sub>K</sub>	22 mm	Ball diameter
d <sub>1</sub>	18.4 mm	Outer flange diameter inner ring
d <sub>2</sub>	40 mm	Outer eye diameter
d <sub>3</sub>	M14	Thread size
d <sub>4</sub>	21 mm	Shank diameter
h <sub>1</sub>	61 mm	Shank Length Internal thread head
C <sub>1</sub>	10 mm	Width of the rod end
α	8 °	Tilt angle
l <sub>3</sub>	30 mm	Thread length Internal thread
l <sub>4</sub>	81 mm	Total length internal thread head
l <sub>5</sub>	8 mm	length rod end shank
l <sub>7</sub>	20 mm	Distance drilling with/shaft start
d <sub>5</sub>	26 mm	Shank diameter, large
W	22 mm	Width Across Flat
G <sub>r</sub>	0 - 0,04 mm	Radial Clearance
d <sub>OT</sub>	0 mm	Bore diameter bearing, upper tolerance
d <sub>UT</sub>	-0.008 mm	Bore diameter bearing, lower tolerance
B <sub>OT</sub>	0 mm	Width inner ring, upper tolerance
B <sub>UT</sub>	-0.12 mm	Width inner ring, lower tolerance

### Mounting dimensions

r <sub>1smin</sub>	0.3 mm	Edge Spacing
--------------------	--------	--------------

**Temperature range**

$T_{\min}$	-50 °C	Operating temperature min.
$T_{\max}$	200 °C	Operating temperature max.